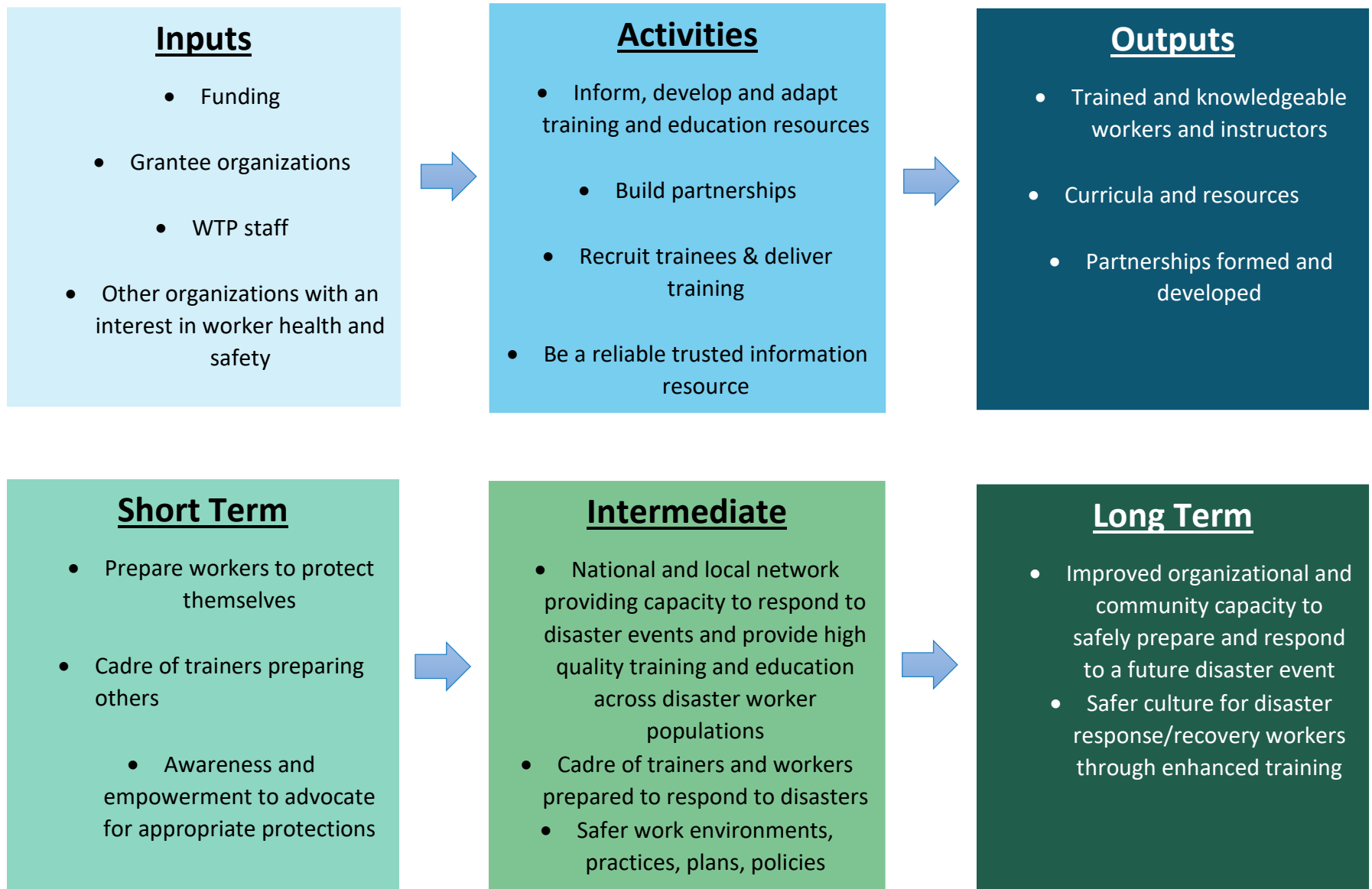


Simplified Logic Model for NIEHS Worker Training Program Disaster Response Activities (1.3.24)

Program Purpose: Support the development, implementation, and dissemination of occupational safety and health worker training programs to prevent and reduce hazards to workers who are at risk of harm through disaster response/recovery work activities. This logic model is intended for general disaster response as it relates to NIEHS WTP supported training and education.



Suggested Common Questions for Disaster Supplements:

To what extent do you agree with the following statements?

The training has prepared me to recognize hazards related to a disaster event.

Strongly Disagree – Disagree – Neutral – Agree – Strongly Agree

The training has increased my knowledge on how to control hazards related to a disaster event.

Strongly Disagree – Disagree – Neutral – Agree – Strongly Agree